



Effective RMA Participation

One-day workshop for individuals and community groups

Saturday 11 February 2012
Thames

1

www.eds.org.nz



Workshop Overview

Gary Taylor
Chairman
Environmental Defence Society

2

www.eds.org.nz



What is EDS?

- Incorporated society established in 1971
- Comprised of resource management professionals
- Managed by 16 directors
- Has approved charitable status

3

www.eds.org.nz

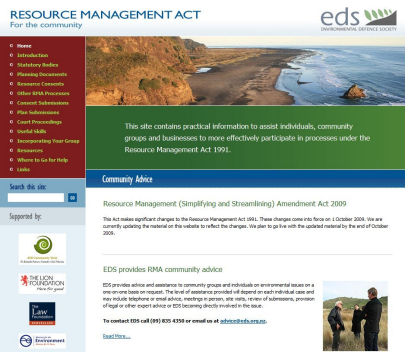
Focus Areas

- Landscape protection
- Freshwater management
- Coastal and oceans management
- Climate change adaptation
- Good environmental governance

Research



Community Capacity Building



eds
ENVIRONMENTAL DEFENCE SOCIETY

Community Guides

7 www.eds.org.nz

eds
ENVIRONMENTAL DEFENCE SOCIETY

Conferences

8 www.eds.org.nz

eds
ENVIRONMENTAL DEFENCE SOCIETY

RMA Reforms

Section 6 and 7 review

- Natural hazards
- Urban design
- Infrastructure
- Other?

Changes to plan-making process, some options being considered

- Collaborative processes
- One blended hearing
- Limited rights of appeal

9 www.eds.org.nz



Overview of Workshop Programme

- 10.00am Session 1: Introduction and RMA update
- 10.30am Session 2: Participating council planning processes
- 12.00noon LUNCH
- 12.45pm Session 3: The Environment Court and NPSs
- 2.30pm AFTERNOON TEA
- 2.50 pm Session 4: Local planning processes
- 4.30-5.00pm CLOSE

10

www.eds.org.nz



Acknowledgements

This event has been convened with
assistance from
Thames-Coromandel District Council
Waikato Regional Council
Ministry for the Environment

11

www.eds.org.nz
